

# SERENOCEM<sup>TM</sup> Otologic Cement

*Unique benefits to help you address the special stability challenges  
in today's and tomorrow's Ossiculoplasty.*

## ***Superior handling and fashioning***

Serenocem's viscosity, while wet, gives the Otologic surgeon the added advantage of molding without fear of dripping.

## ***"Taffy-like" Spanning Ability***

supports easy and safe fashioning of the cement over a formidable gap of an open ISJ.

## ***Expectable and Predictable***

set up time, every time.

## ***Unique bonding Strength***

supports secure and long-term bone to bone or bone to allograft attachment.

## ***The Confidence and Trust***

of 20 years of reported Global Successful.



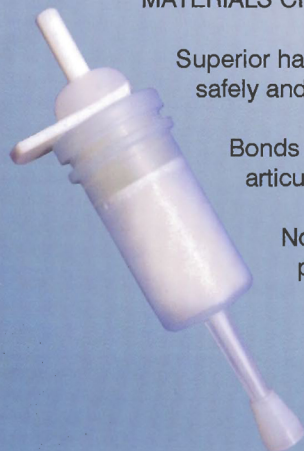
**INVOTEC  
INTERNATIONAL®**



# SERENOCEM™ Otologic Cement

*Middle Ear Surgery has achieved a new level of sophistication as new materials broaden the scope and options in Ossiculoplasty. Serenocem™ Otologic Cement represents a new standard in material for middle ear reconstruction.*

## MATERIALS CHARACTERISTICS



Superior handling characteristics, the viscosity of soft taffy, assists in safely and easily spanning open Ossicular gaps.

Bonds to metal prosthesis can supplement the stability of new articulated Totals, Partials or Stapes Replacement Prostheses.

Non-exothermic snap set up prevents any thermal damage possibility.

Bioactive/Osteoconductive ion release

Minimal shrinkage

MRI Compatible

Catalog No.	Description	Qty/Box
BC-010	Serenocem™ Cement	2 individually packaged capsules
BC-010S	Serenocem™ Cement	1 individually packaged capsule

## Serenocem™ Applicator and Mixer

*These critical components are supplied to provide predictable and timely formulation of SerenoCem Otologic Cement, within the time window expected.*



### Serenocem Mixer

Set to operate for 10 seconds, to mix the cement to a predicable consistency, every time.

### Serenocem Applicator

Used to aseptically inject the mixed cement aliquot onto a sterile microscope slide or cutting block.

### Application Suction Tip

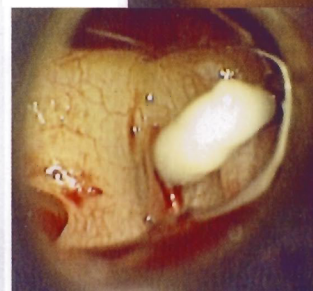
Disposable Rosen type suction tip, 24G (.4mm x70mm) for use in fashioning the cement across the discontinuity or onto a prosthesis.



Catalog No.	Description	Qty/Box
BC-280	Mixer (110 V)	1 unit
BC-150	Applicator	1
66500040	Disposable Suction Tip (24G. .4mm x 70mm)	10



*Open ISJ*



*Closed bridge using*

**Serenocem™**

*(Bridging the open ISJ)*

## APPLICATIONS FOR USE

- Bridging an open or damaged Incudostapedial Joint by fashioning a drop of Serenocem™ across the gap.
- Enhanced, Stable reconstruction of the Ossicular Chain with allograft or wire looped stapes piston.
- Augmentation of the incus remnant and loop securement in revision stapes replacement.
- Cementing of Bone Graft or Prosthesis during reconstruction of the Posterior Canal Wall
- Cementation of cochlear implant electrode array or incus attachment of an implantable hearing aid device.